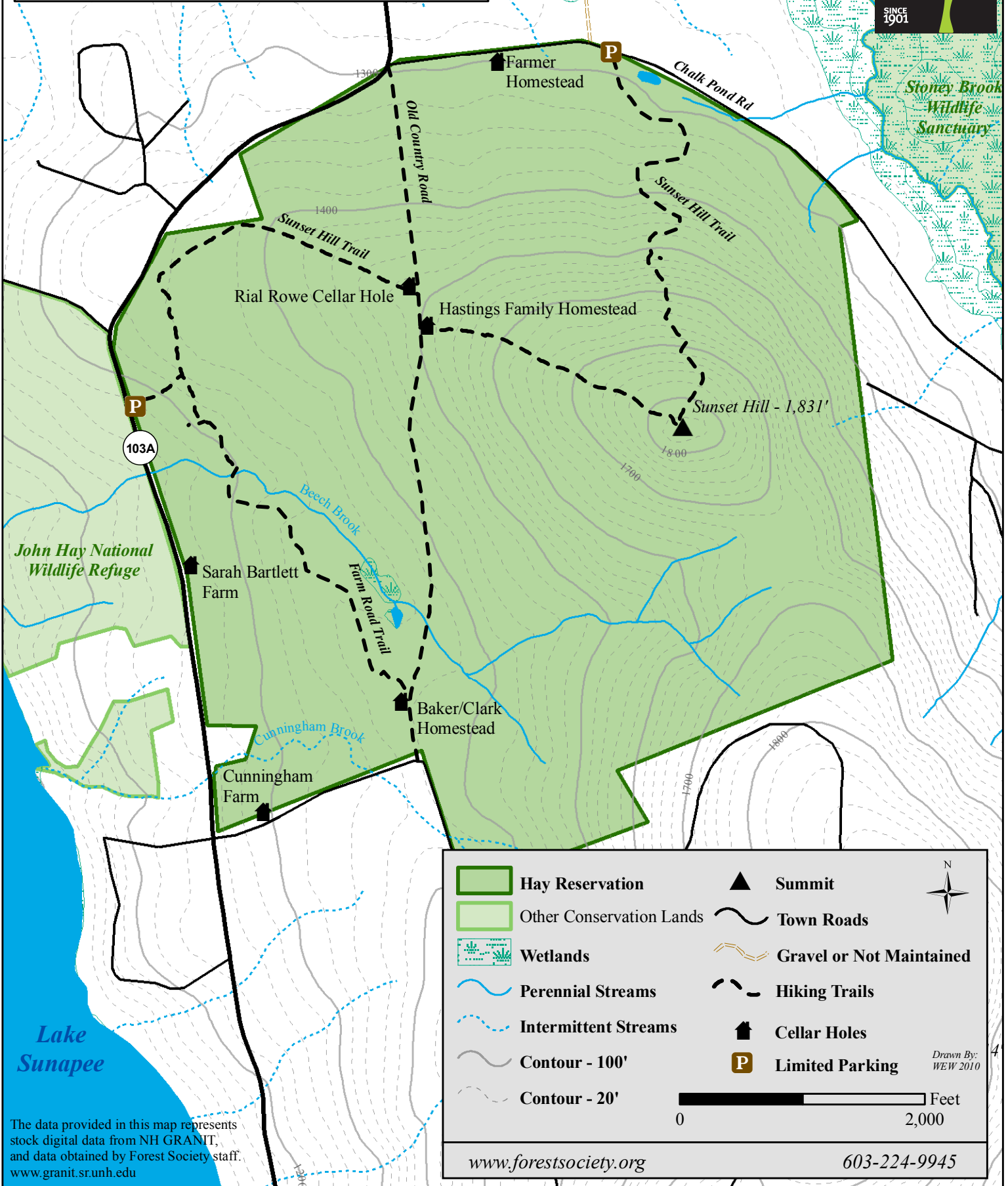


# C. L. Hay Forest and Wildlife Management Area

719 Acres Newbury, NH

SOCIETY FOR THE PROTECTION OF NEW HAMPSHIRE FORESTS



Stoney Brook Wildlife Sanctuary

John Hay National Wildlife Refuge

Lake Sunapee

	Hay Reservation		Summit	
	Other Conservation Lands		Town Roads	
	Wetlands		Hiking Trails	
	Perennial Streams		Cellar Holes	
	Intermittent Streams		Limited Parking	<p>Drawn By: WEW 2010</p>
	Contour - 100'			
	Contour - 20'			

The data provided in this map represents stock digital data from NH GRANIT, and data obtained by Forest Society staff. www.granit.sr.unh.edu

www.forestsociety.org

603-224-9945